



SOURASHTRA COLLEGE, (Autonomous) MADURAI.

(A Linguistic Minority Co-education Institution)

(Affiliated to Madurai Kamaraj University & Re-Accredited with 'B+' Grade by NAAC)

Vilachery Main Road, Pasumalai (P.O), Madurai-625004.

Contact No.: 87542 09994

□ sourashtracollege.com

NAAC CYCLE IV – SELF STUDY REPORT

7.1.1. Institution has initiated the Gender Audit and measures for the promotion of gender equity during the last five years.

Facilities for women on campus

HOSTEL FACILITY





SOURASHTRA COLLEGE, (Autonomous) MADURAI.

(A Linguistic Minority Co-education Institution)

(Affiliated to Madurai Kamaraj University & Re-Accredited with 'B+' Grade by NAAC)

Vilachery Main Road, Pasumalai (P.O), Madurai-625004.

Contact No.: 87542 09994

□ sourashtracollege.com

NAAC CYCLE IV – SELF STUDY REPORT





SOURASHTRA COLLEGE, (Autonomous) MADURAI.

(A Linguistic Minority Co-education Institution)

(Affiliated to Madurai Kamaraj University & Re-Accredited with 'B+' Grade by NAAC)

Vilachery Main Road, Pasumalai (P.O), Madurai-625004.

Contact No.: 87542 09994

□ sourashtracollege.com

NAAC CYCLE IV – SELF STUDY REPORT

HOSTEL ACCOMMODATION





SOURASHTRA COLLEGE, (Autonomous) MADURAI.

(A Linguistic Minority Co-education Institution)

(Affiliated to Madurai Kamaraj University & Re-Accredited with 'B+' Grade by NAAC)

Vilachery Main Road, Pasumalai (P.O), Madurai-625004.

Contact No.: 87542 09994

□ sourashtracollege.com

NAAC CYCLE IV – SELF STUDY REPORT

HOSTEL – RECREATION ROOM





SOURASHTRA COLLEGE, (Autonomous) MADURAI.

(A Linguistic Minority Co-education Institution)

(Affiliated to Madurai Kamaraj University & Re-Accredited with 'B+' Grade by NAAC)

Vilachery Main Road, Pasumalai (P.O), Madurai-625004.

Contact No.: 87542 09994

□ sourashtracollege.com

NAAC CYCLE IV – SELF STUDY REPORT

HOSTEL – MESS FACILITY





SOURASHTRA COLLEGE, (Autonomous) MADURAI.

(A Linguistic Minority Co-education Institution)

(Affiliated to Madurai Kamaraj University & Re-Accredited with 'B+' Grade by NAAC)

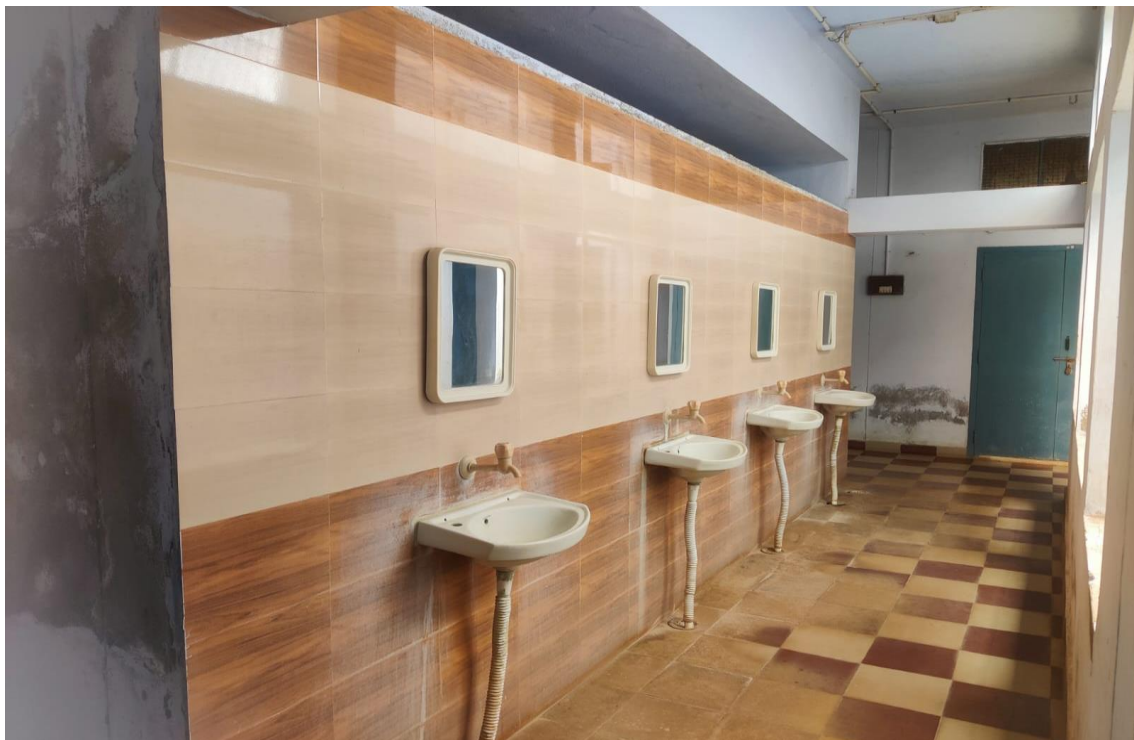
Vilachery Main Road, Pasumalai (P.O), Madurai-625004.

Contact No.: 87542 09994

□ sourashtracollege.com

NAAC CYCLE IV – SELF STUDY REPORT

HOSTEL – REST ROOM





SOURASHTRA COLLEGE, (Autonomous) MADURAI.

(A Linguistic Minority Co-education Institution)

(Affiliated to Madurai Kamaraj University & Re-Accredited with 'B+' Grade by NAAC)

Vilachery Main Road, Pasumalai (P.O), Madurai-625004.

Contact No.: 87542 09994

□ sourashtracollege.com

NAAC CYCLE IV – SELF STUDY REPORT

BUS FACILITIES FOR GIRLS STUDENTS





SOURASHTRA COLLEGE, (Autonomous) MADURAI.

(A Linguistic Minority Co-education Institution)

(Affiliated to Madurai Kamaraj University & Re-Accredited with 'B+' Grade by NAAC)

Vilachery Main Road, Pasumalai (P.O), Madurai-625004.

Contact No.: 87542 09994

□ sourashtracollege.com

NAAC CYCLE IV – SELF STUDY REPORT

REST ROOM





SOURASHTRA COLLEGE, (Autonomous) MADURAI.

(A Linguistic Minority Co-education Institution)

(Affiliated to Madurai Kamaraj University & Re-Accredited with 'B+' Grade by NAAC)

Vilachery Main Road, Pasumalai (P.O), Madurai-625004.

Contact No.: 87542 09994

□ sourashtracollege.com

NAAC CYCLE IV – SELF STUDY REPORT

CCTV-FACILITY





SOURASHTRA COLLEGE, (Autonomous) MADURAI.

(A Linguistic Minority Co-education Institution)

(Affiliated to Madurai Kamaraj University & Re-Accredited with 'B+' Grade by NAAC)

Vilachery Main Road, Pasumalai (P.O), Madurai-625004.

Contact No.: 87542 09994

□ sourashtracollege.com

NAAC CYCLE IV – SELF STUDY REPORT

SECURITY SERVICE





SOURASHTRA COLLEGE, (Autonomous) MADURAI.

(A Linguistic Minority Co-education Institution)

(Affiliated to Madurai Kamaraj University & Re-Accredited with 'B+' Grade by NAAC)

Vilachery Main Road, Pasumalai (P.O), Madurai-625004.

Contact No.: 87542 09994

□ sourashtracollege.com

NAAC CYCLE IV – SELF STUDY REPORT

LIGHTING FACILITY





SOURASHTRA COLLEGE, (Autonomous) MADURAI.

(A Linguistic Minority Co-education Institution)

(Affiliated to Madurai Kamaraj University & Re-Accredited with 'B+' Grade by NAAC)

Vilachery Main Road, Pasumalai (P.O), Madurai-625004.

Contact No.: 87542 09994

□ sourashtracollege.com

NAAC CYCLE IV – SELF STUDY REPORT

ANTI-RAGGING

